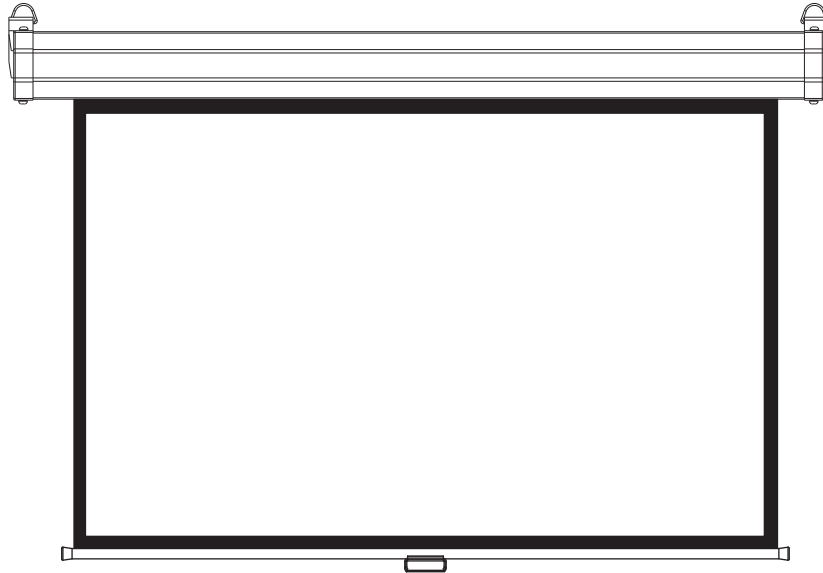


Auto-lock Manual Projection Screen

USER'S GUIDE



Thank you for choosing the Auto-lock Manual projection screen! Please read through this user guide before using the screen. Correct usage and maintenance will ensure a long product life.

Care & Use Instructions

Dust, dirt and scratches on the projection surface will affect the picture quality, please take note of the points below to prevent that from occurring:

1. Do not touch the projection surface with your hands.
2. Do not write or draw on the projection surface.
3. Do not use fingers or sharp objects to point on the projection surface; this will damage the screen material.
4. Use a soft-damp cloth to clean the projection surface; do not use chemical cleaning agents or alcohol.
5. To avoid damage and injury, the screen should only be operated by adults.

Important Safety & Warning Precautions

1. Please retain this user's guide for future reference
2. To avoid damaging the unit, do not use with any unauthorized accessories not recommended by the manufacturer.
3. Handle the unit carefully during transportation to avoid any damages.
4. Do not install the unit on uneven or inclined surfaces.
5. There are not user serviceable parts in this unit. Do not attempt to disassemble this unit by yourself.
6. Only authorized technicians can open and repair this unit.

Installation Instruction

fig.1

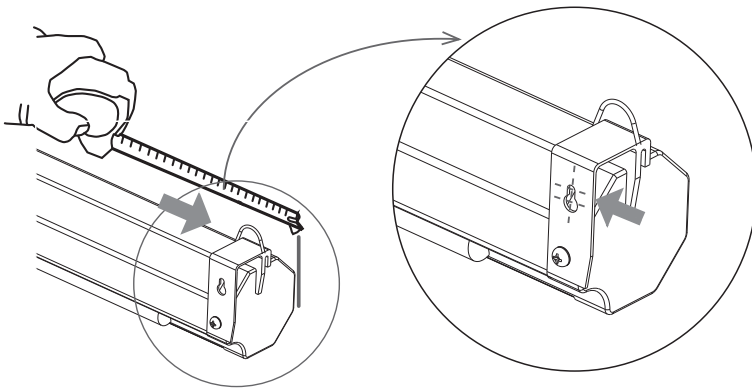


fig.2

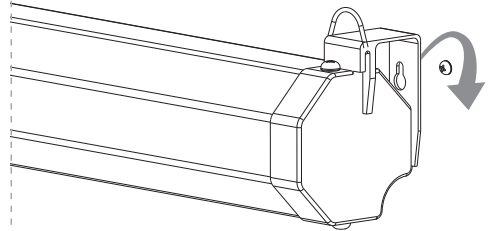


fig.3

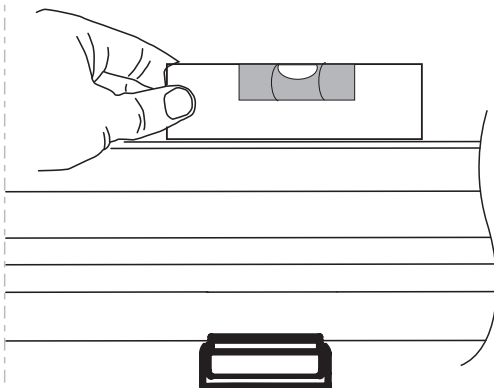


fig.4

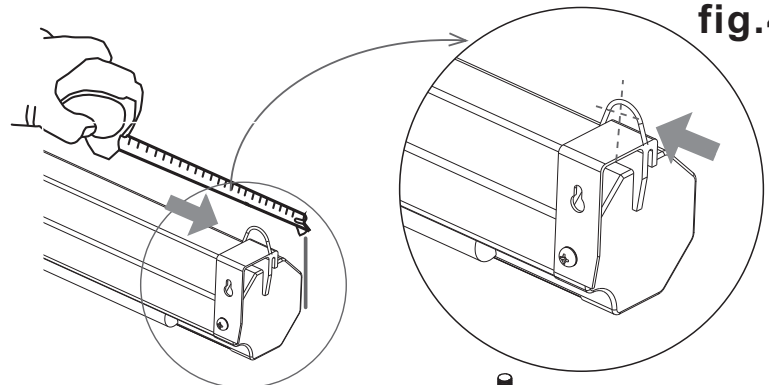
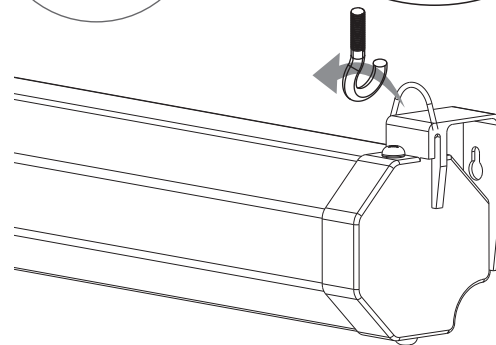


fig.5



Wall mounted option: Use a tape ruler to measure the length between the mounting hole and the side of the bracket, as shown in fig.1. Mark the position of the hole, and drill the hole. Then, insert a screw, and hang the screen on the screw, as shown in fig.2. Use a bubble level to adjust the unit to an even position, as shown in fig.3. Hang the other side on wall by same procedures.

Hanging option: Use a tape ruler to measure the length between the hanger and the side of the bracket, as shown in fig.4. Mount two optional L Bracket according to the previous measurement in order to hang the unit on the hooks as shown in fig.5.

Operation Instruction

fig.6

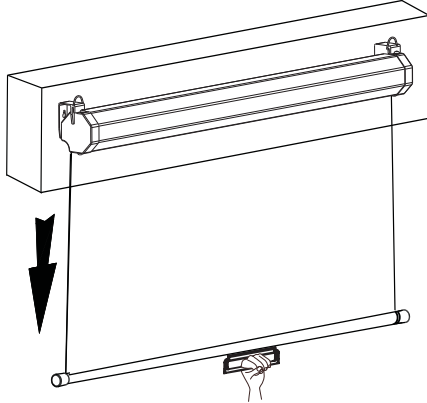


fig.7

CAUTION Do not pull down further!

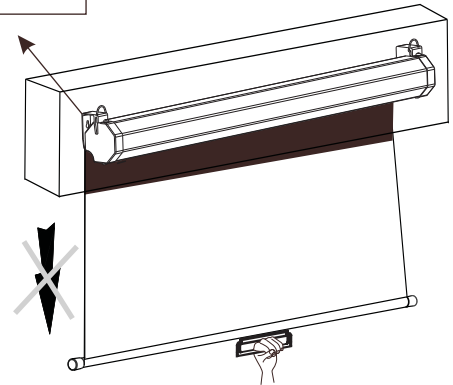
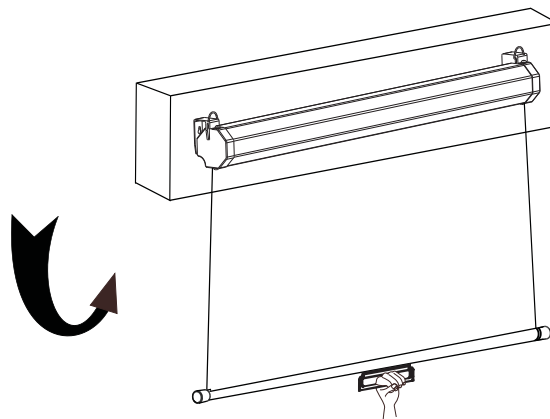


fig.8



Pull the screen down to your desired height, as shown in fig.6.

Note: Do not pull the screen further down, if it can't be pulled, as shown in fig.7. Pull the screen down a little and release. The screen will completely roll up, as shown in fig.8.

Note: Please completely roll up the screen while not in use.